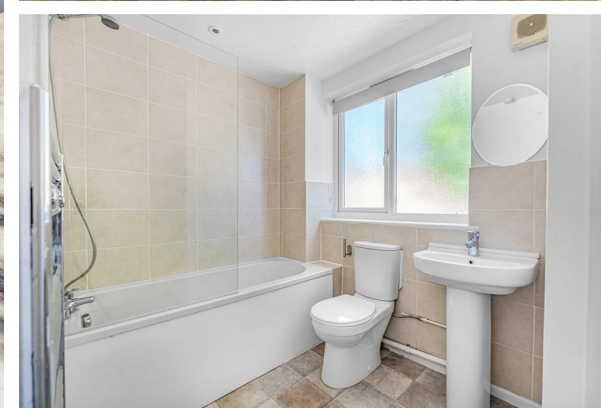


west
THE PROPERTY CONSULTANCY

TO LET

11 Rawson Close, Oxford, Oxfordshire, OX2 8BS

£1,900 Per Calendar Month



- Entrance hall
- Kitchen/Dishwasher
- Principle bathroom
- Rear garden
- Unfurnished
- Cloakroom
- Three bedrooms
- Living area
- Garage
- Available immediately

WOLVERCOTE

Oxford City Centre c.2.2 miles, Oxford Rail Station c. 2.3 miles

A much coveted North Oxford village on the edge of atmospheric Port Meadow is the location for this semi detached 3 bedroom house built in the late 20th Century. Nicely presented with light filled accommodation comprises; entrance hall, cloaks, fitted kitchen, living area, bathroom, garage & garden to the rear. The property offers ease of access to Summertown and the village offers some local amenities including the famous Trout Inn which was the regular haunt of the fictional character 'Inspector Morse'.

QUOTING RENT: £1,900 pcm

THE PROPERTY

ACCESSIBLE VILLAGE AMBIENCE - A spacious unfurnished 3 bedroom end of terrace house available for a 12 month let.

AVAILABLE NOW

Rawson Close, Oxford, OX2 8BS

Approximate Gross Internal Area = 102.84 sq m / 1107 sq ft

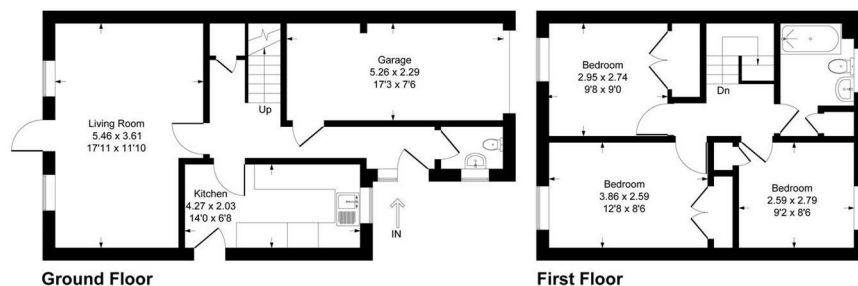


Illustration for identification purpose only, measurements approximate, and not to scale.

SITUATION

Contact: lucy@west-tpc.co.uk
(t) 01865 510000 (e) lucy@west-tpc.co.uk

A holding deposit of 1 weeks rent will apply and be taken when making an application is accepted, subject to referencing, by a landlord. Please contact the office for further details if required

Directions

From the Woodstock Road roundabout take the slip road exit signposted Wolvercote proceeding down Godstow Road. At the first roundabout turn right into Rawson close and the property can be located on the left hand side . What3words:///nerve.print.order

216 Banbury Road, Oxfordshire, OX2 7BY

Tel: 01865 510000 Email: oxford@west-tpc.co.uk <https://www.west-tpc.co.uk>